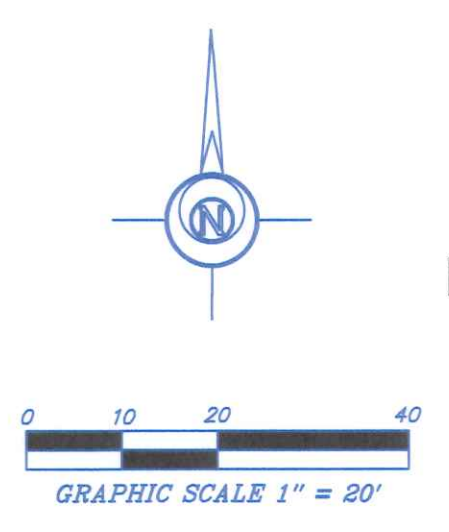
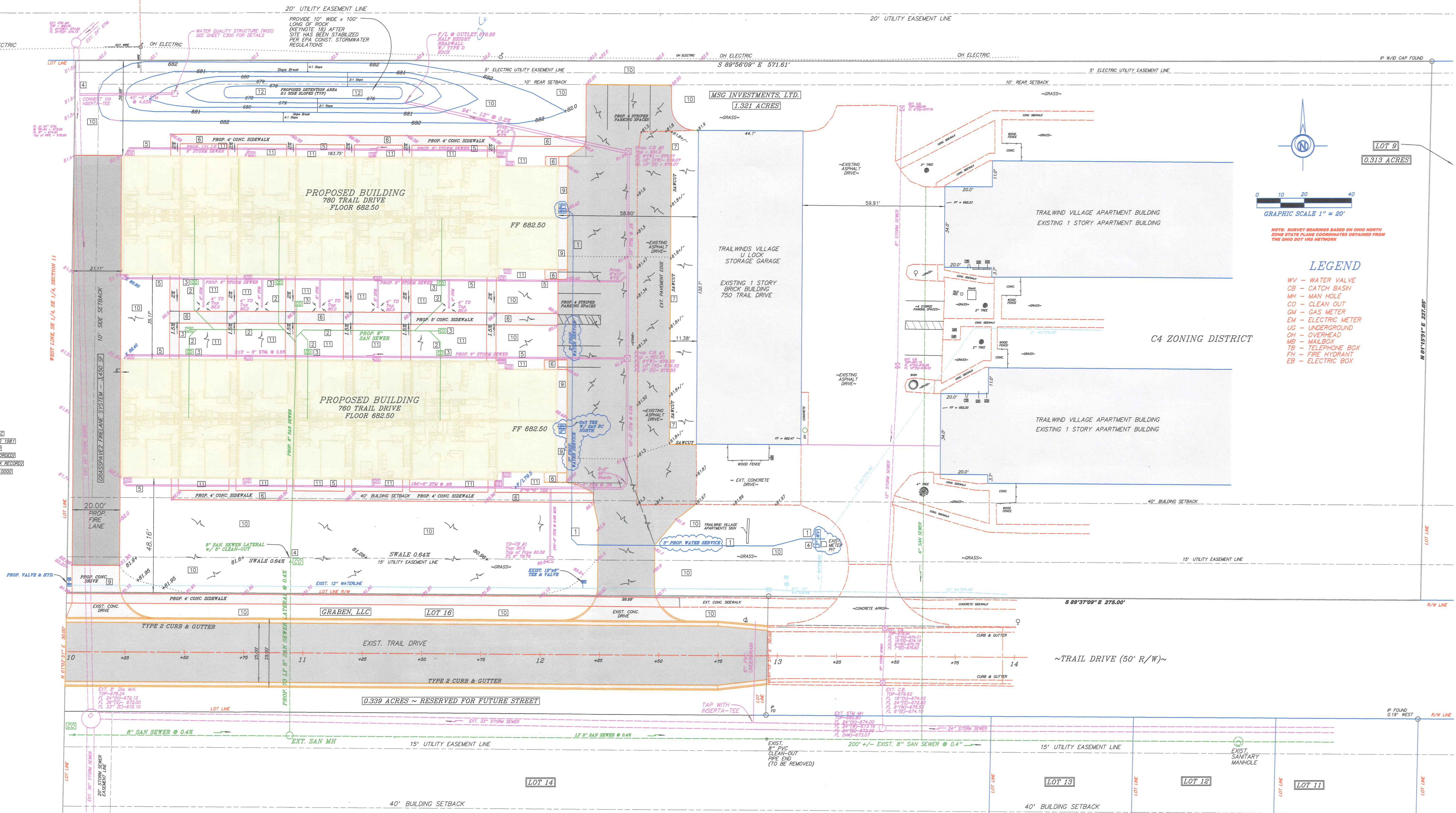


WAL-MART REAL ESTATE BUSINESS TRUST
 DE-PLAT OF MORTGAGE CENTER LOT 7
 LOT A - 24.420 ACRES
 SEC. 28&A & 328B
 PLS. #1-119172.0020



NOTE: SURVEY BEARINGS BASED ON OHIO NORTH ZONE STATE PLANE COORDINATES OBTAINED FROM THE OHIO DOT VRS NETWORK

LEGEND

- WV - WATER VALVE
- CB - CATCH BASIN
- MH - MAN HOLE
- CO - CLEAN OUT
- GM - GAS METER
- EM - ELECTRIC METER
- UG - UNDERGROUND
- OH - OVERHEAD
- MB - MAILBOX
- TB - TELEPHONE BOX
- TH - FIRE HYDRANT
- EB - ELECTRIC BOX

GRABEN, LLC
 20.00' PROP. FIRE LANE
 27.32 AC. (RECORDED)
 18.78 AC. (PROP. TAX RECORD)
 PLS. #1-119172.0020

NOTE: PROPOSED STORM SEWERS HAVE MINIMAL COVER. CONTRACTOR TO PROTECT STORM SEWERS DURING CONSTRUCTION FROM DAMAGE

- PROJECT KEYNOTES:**
- 1) PROPOSED HDPE WATER SERVICE CONNECTED TO EXIST. METER PIT - CITY TO INSPECT & OBSERVE CONNECTION
 - 2) PROPOSED 6-INCH PVC SANITARY SEWER SERVICE AT 1.0% MINIMUM SLOPE
 - 3) PROPOSED 6-INCH CLEAN OUT
 - 4) CONTRACTOR TO FIELD VERIFY LOCATION OF EXISTING UNDERGROUND UTILITIES PRIOR TO CONSTRUCTION
 - 5) PROPOSED 8" PVC SDR 35 STORM SEWER CONNECTED TO DOWNSPOUTS
 - 6) PROPOSED 4" SIDEWALK (SEE PLAN FOR DIMENSIONS)(SEE DETAIL SHEET C300)
 - 7) SAWCUT, REMOVE, REPAIR & BAND ASPHALT TO ALLOW FOR PROPOSED CONCRETE/ASPHALT INSTALLATION
 - 8) PROPOSED 5" ASPHALT PAVEMENT (SEE DETAIL SHEET C300)
 - 9) PROPOSED 6" CONCRETE PAVEMENT (SEE DETAIL SHEET C300)
 - 10) AREAS OF TOPSOIL FILL AND SEEDING
 - 11) AREAS OF TOPSOIL FILL (BY SITE CONTRACTOR) AND LANDSCAPING (BY OTHERS)
 - 12) PROVIDE ODOT #1 & #2'S 12" THICK (SEE PLAN FOR WIDTHS)

2 WORKING DAYS BEFORE YOU DIG!

OHIO Utilities Protection SERVICE
 www.oups.org
 Click, Call or Tap Before You Dig
 (800) 362-2764 or 811
 NON-MEMBERS MUST BE CALLED DIRECTLY

SITEPLAN
TRAILWINDS II APARTMENTS
MSG INVESTMENTS, LTD.
760 & 780 TRAIL DRIVE
NAPOLEON, OHIO 43545

SCALE 1" = 20'
 JOB #16-220
 DRAWN BY GAB 6/22/18
C101



Bockrath & Associates
 Engineering and Surveying, LLC
 115 S. Fair Avenue, Suite A - Ottawa - Ohio
 Phone: 419.523.5789